



**CASTORCRETE**™  
*Sustainable Urethane Modified Concrete*



Engineered for easy installation.

# CASTORCRETE™

## A Unique Line of Urethane Modified Concrete

CASTORCRETE™ is designed for use in the most demanding food and beverage processing areas where high resistance to impact, abrasion and chemical resistance to organic food acids is required.

CASTORCRETE™ is formulated with renewable raw materials and contains no VOCs, making it a viable option for environmentally friendly projects. It offers exceptional thermal shock resistance and is available with an anti-microbial additive to inhibit the growth of bacteria and micro organisms.

Not only is CASTORCRETE™ durable and environmentally friendly, but it was also designed to address limited work-time. This is a common industry problem that often occurs during the installation of polyurethane concretes. In response to this, we developed 2 formulations of CASTORCRETE™. Our Fast Cure formulation was designed for installations that require a quick turnaround. Our Regular Cure formulation offers more work-time and a slower set time which equates to a much easier installation and better overall aesthetics of your finished flooring system.

### CASTORCRETE™

- ✓ Longer Work-Time
- ✓ Thermal Shock Resistant
- ✓ Anti-Microbial
- ✓ Exceptional Chemical Resistance
- ✓ Fast-Cure Formulation
- ✓ Regular-Cure Formulation



### BENEFITS OF URETHANE MORTAR vs. EPOXY

The physical properties of urethane mortar systems are far superior to that of epoxy systems when it comes to specific applications such as heavy-duty industrial food processing, pharmaceutical manufacturing facilities, breweries or meat, fish and dairy processing plants. Below is a list of attributes where urethane mortar excels over epoxy.

- ✓ Withstands heavy abuse
- ✓ Very low odor
- ✓ No risk to open food products
- ✓ Impervious to radical temperature changes
- ✓ Withstands extreme temperatures

*All systems are available in Fast-Cure and Regular-Cure formulations.*

# CASTORCRETE™

## Products & Systems Overview

### CASTORCRETE™ TG

#### CASTORCRETE™ TG System

CastorCrete™ TG is a heavy duty trowel applied urethane mortar that is designed to resurface badly deteriorated concrete and withstand extreme physical and chemical abuse including steam cleaning, steel wheeled carts and heavy impact. CastorCrete™ TG has outstanding chemical resistance to most solvents and is perfect for areas exposed to strong acids, alkali, hot oils and animal fat.

### CASTORCRETE™ RT

#### CASTORCRETE™ RT System

A heavy duty flowable urethane mortar that is designed to resurface moderately deteriorated concrete and withstand extreme physical and chemical abuse, including, but not limited to steam cleaning, carts and heavy impact. CastorCrete™ RT produces a smooth, easy to clean matte finish.

#### CASTORCRETE™ RT-B System

A heavy duty flowable urethane mortar that is broadcast with colored quartz. The CastorCrete™ RT-B System is designed to resurface moderately deteriorated concrete and withstand extreme physical and chemical abuse, including, but not limited to steam cleaning, carts and heavy impact. CastorCrete™ RT-B produces a textured surface ideal for wet environments. The use of blended color quartz offers improved esthetics.

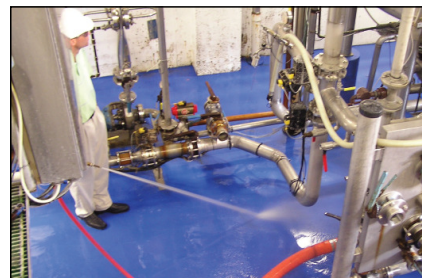
### CASTORCRETE™ SL

#### CASTORCRETE™ SL System

A medium-duty urethane slurry that is designed to resurface concrete and withstand physical and chemical abuse, including, but not limited to high abrasion and impact. It also has outstanding chemical resistance. The CastorCrete™ SL system produces a smooth, easy to clean matte finish.

#### CASTORCRETE™ SL-B System

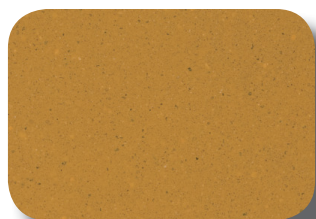
A medium-duty urethane slurry that is broadcast with colored quartz. This system is designed to resurface concrete and withstand physical and chemical abuse, including, but not limited to high abrasion and impact. It also has outstanding chemical resistance. CastorCrete™ SL-B produces a textured surface ideal for wet environments. The use of blended color quartz offers improved esthetics.



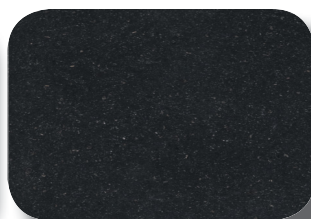
### CASTORCRETE™ CM

A heavy duty urethane mortar that is designed for troweling cove. CastorCrete™ CM can withstand extreme physical and chemical abuse including steam cleaning and heavy impact. The outstanding chemical resistance of CastorCrete™ CM is well suited for areas exposed to strong acids, alkali, hot oils, animal fat and most solvents.

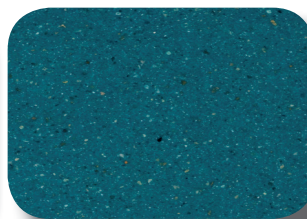
## CASTORCRETE™ COLOR PALETTE



■ *Bronze*



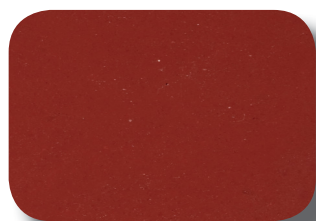
■ *Coal*



■ *Cobalt*



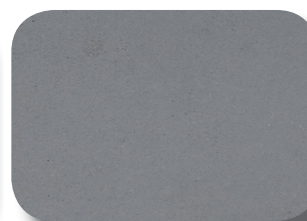
■ *Dark Grey*



■ *Dark Red*



■ *Evergreen*



■ *Light Grey*



■ *Natural*

*\*A premium will be charged for Cobalt and Evergreen.*

EXPERIENCE THE **CASTORCRETE™** DIFFERENCE FOR YOURSELF.

[www.castorcrete.com](http://www.castorcrete.com)

